



GRAYMONT

WELCOME TO GRAYMONT

BEDFORD

Contractor orientation

Printed copies are not official

Agenda

- ▶ **1. Introduction**
- ▶ **2. Obligations**
- ▶ **3. Personal Protective Equipement's (PPE)**
- ▶ **4. Basic rules**
- ▶ **5. High-Risk tasks**
- ▶ **6. Circulation**
- ▶ **7. Cleanliness and environment**
- ▶ **8. Incident management**

1.Introduction – Graymont’s : Presentation

▶ GRAYMONT’S MISSION

- Contributing to a decarbonized world by providing essential lime and limestone solutions.

▶ OUR VISION

- Be a world class leader in everything we do!

- Safety
- Customer Services
- Communities
- Environnement
- Value creation
- Peoples

▶ Our values

- The ultimate success of Graymont lies in the efforts of passionate individuals who are ready to actively engage in teamwork and collaboration, in keeping with our shared values. These values include:


- Integrity
- Respect
- Team work
- Innovation
- Excellence
- Long-term vision
- Accountability

1. Introduction – Graymont's Products

Pulverized limestone products

Stone dust, food supplements, glass, premix, lime for soil and granulated lime.

Quicklime

 [Safety Data Sheets \(WHMIS\)](#)

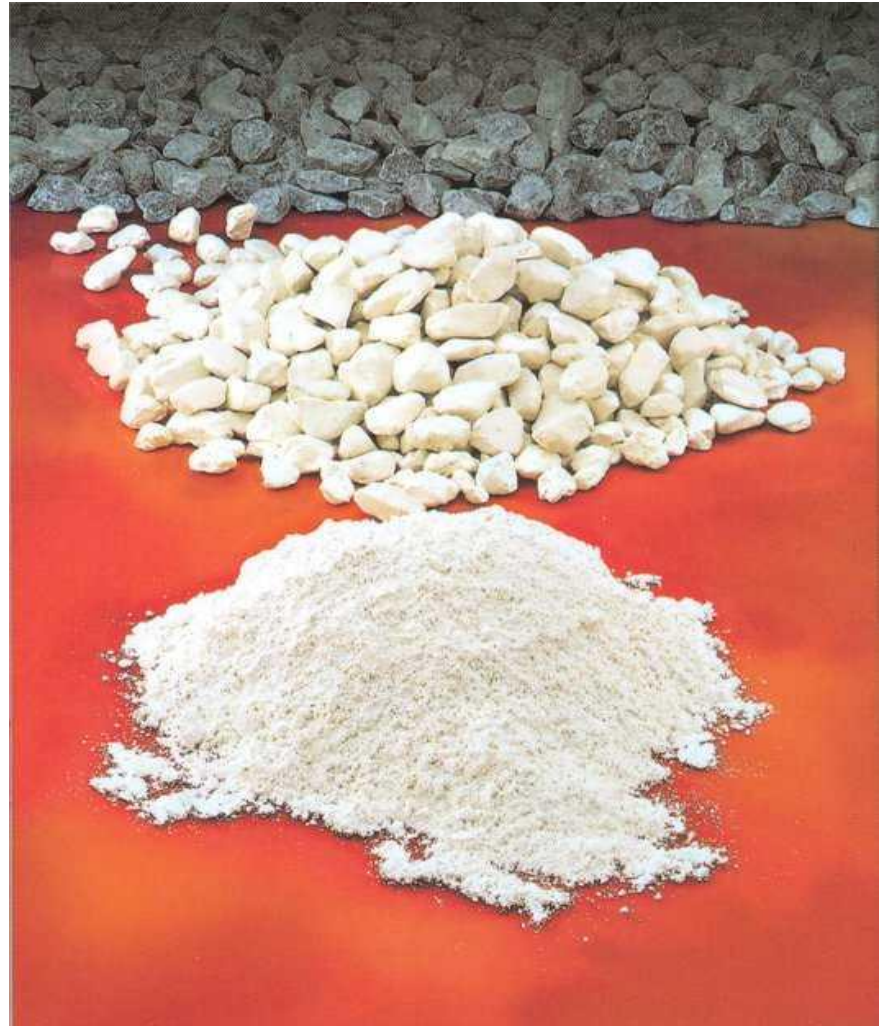
Granulated, crushed, pulverized

Hydrated lime

 [Safety Data Sheets \(WHMIS\)](#)

Aggregate

Chemical quality , Earthwork quality



GRAYMONT

1. Introduction – Graymont’s Activities

Drilling, blasting - Off-road transport - Crushing, grinding, sieving
Calcination - Laboratory analysis - Storage, bagging, distribution



1. Performances en santé et sécurité

Graymont is committed to continuously improving its safety metrics



2. Obligations – Contractor responsibility



Contractor's responsibility:

- Complete the annual orientation training
- Have the name and contact number of your Graymont contact person on hand
- For subcontractors: have the name of the prime contractor
- Possess the required certification cards and training certificates

Do not perform work that poses a danger to your safety or the safety of others.

3. PPE - Minimum requirements

- ✓ **Mandatory : CSA Z94.3 Security glasses**
- ✓ **Mandatory : CSA Z94.1 Safety helmet with reflective band**
- ✓ **Mandatory : CSA 96-02 class 2 high visibility clothing**
- ✓ **Mandatory : CSA Z195 8" steel toe boots**
- ✓ **Mandatory : Hearing protection in designated areas**
- ✓ **Mandatory : Beacon for any vehicle running on the site**



3. PPE – Additional requirements

Grinding :

-Visor and safety glasses must be worn with a safety helmet



Welding and flame cutting :

-UV protection worn with a safety helmet



Visible dust and areas where coal is present :

-N95 dust mask



Great exposure to lime products :

-A complete Tyvek fabric combination with airtight sleeves
-Waterproof goggles, filtered air respirator or full-face mask



3. PPE – Handling of lime products

Lime products are highly reactive in the presence of moisture, water and acid.

Hazards: Burns, skin/eye irritation, respiratory irritation, eye irritation



Skin Protection

Clothing that covers the skin, waterproof protective gloves.
Waterproof closures at the wrists, legs and torso.



Eye protection

Waterproof goggles, 3M full-face respirator

For hazardous tasks, a bottle of dyphoterine may be made available near the work area



Respiratory protection (as soon as dust is visible in the air)

N95 mask, cartridge mask, or powered air- purifying respirator

3. Contact with Lime – First Aid



Eye contact

- **Immédiatement rincer les yeux avec une bouteille de Diphoterine.**
 - ✓ Use it within the first minute; do not wait,
 - ✓ Use the entire bottle and
 - ✓ Finish by rinsing the eyes with saline solution to help the eyes return to normal more quickly.
 - ✓ If you cannot rinse immediately with Diphoterine, use the eye wash station and rinse as quickly as possible with the diphoterine solution.
 - ✓ Available in the kiln control room, the laboratory, and at the top of the silos.

*** View the safety data sheet for quicklime**

[FDS : Chaux-vive-a-haute-teneur-en-calcium.pdf](#)



3. Contact with Lime – First Aid



Contact of lime with the skin or mucous membranes

- Gently remove the lime
- **Apply diphotérine within one minute of exposure**, or as soon as symptoms of burning appear. .
- Use the entire bottle
- If Diphotérine is not available, use water and rinse as quickly as possible with the Diphotérine solution.
- If the **moral mucous have been affected**, rinse the mouth with Diphotérine solution and spit it out; follow the same procedure for the **ear canal**, tilting the head to one side to allow the liquid to drain out of the ear.



- **View the safety data sheet for quicklime**

[FDS : Chaux-vive-a-haute-teneur-en-calcium.pdf](#)



3. Contact with Lime – First Aid



Mild inhalation::

- Go outside to breathe fresh air



Ingestion:

- Rinse your mouth with water or Diphoterine and spit it out



- **View the safety data sheet for quicklime**
 - [*FDS : Chaux-vive-a-haute-teneur-en-calcium.pdf*](#)

4. Basic rules – code of conduct



▶ Prohibited behavior:

- All forms of **Harassment** are prohibited
- **A zero-tolerance policy** regarding the use of drugs and alcohol or drunkenness or intoxication on this site will be applied.



▶ Smoke-free zone

- Smoking is prohibited inside Graymont buildings or within 9 meters (30 feet) of entrances or windows that open. This includes electronic cigarettes.



▶ Cleanliness

- Waste must be disposed of in appropriate containers. Ask your Graymont contact.
- The use of outdoor and natural areas as a toilet or garbage can, is strictly prohibited.

▶ Prohibited jewelry

- Sauf identifications médicales

4. Basic rules – Pacemakers

Pacemakers and medical implants

Some equipment uses powerful electromagnets. If you have a pacemaker or other medical implant, do not go near the areas marked by warning signs.



4. Basic rules – Electronic devices

The use of electronic devices is a source of distraction. Before using any device, you must come to a complete stop and move to a safe area. Headphones are prohibited in the plant, as they reduce alertness and the ability to hear alarm signals.



Whether you're walking or driving, pull over to a safe spot before talking on your cell phone – even if you're using a hands-free device.

****Photography is prohibited on the site without permission from your Graymont contact person.**

4. Basic rules – Task Analysis

Before starting any work

- ▶ Conduct a task safety analysis (TSA)
- ▶ Identify risks
- ▶ Implement controls
- ▶ Inform new workers joining the team



5. High- Risk Tasks

Les tâches suivantes exigent:

Specialized training, a license, authorization, or additional control measures and/or increased monitoring:

► **Hot work**

Welding, cutting, grinding, torches – **requires a permit**

If the permis requirements cannot be met, fire watch is required once the work is completed.



5. High- Risk Tasks - continued



► Electrical work

Restricted to licensed electricians; restrictions apply regarding arc flash limits. You must be able to demonstrate your qualifications

► Lockout/ Machine safety

- Lockout procedures must be performed under the supervision of a Graymont employee unless you have received training.
- It is prohibited to remove safety guards from equipment without following the lockout procedure.
- Each individual must identify their own safetylock.
- You must be able to demonstrate your qualifications.



5. High- Risk Tasks - continued



► Entering Confined Spaces

A confined space entry permit is required. The permit must be prepared in collaboration with Graymont employees, including atmospheric testing and a rescue plan. You must be able to demonstrate your qualifications.

► Risk of falling (>4 feet)

1. Is it possible to perform the task without being exposed to a risk of falling?
2. If not, is it possible to use a fall arrest system?
3. If a fall arrest system is used, develop a rescue plan and ensure it is inspected.

The use of a portable ladder or step ladder is permitted for short-term work (no more than one hour).



5. High- Risk Tasks - continued



► Scaffolding

The erection, dismantling, and inspection of scaffolding must be performed by a trained individual. The worker must be able to demonstrate their qualifications.

► Safety zone

Indicates the presence of a hazard



Red tape: Do Not Enter

Yellow tape: Warning

Contact the person in charge before entering a zone marked with red tape. A label is affixed to each « red » zone

A template for a 'ZONE DE DANGER' (Danger Zone) warning label. It features a red header with the text 'ZONE DE DANGER' in white. Below the header is a grid of 12 yellow triangular warning icons, each with a small square checkbox to its right. The icons represent various hazards: falling objects, contact with moving machinery, sharp edges, contact with hot surfaces, slipping, tripping, falling from height, machinery, vehicles, and heavy loads. To the right of the grid are four horizontal lines for text: 'Personne contact', 'Tâche', 'Téléphone', and 'Date'. At the bottom right is the logo for 'La Direction GRAYMONT' and a black and yellow striped hazard border.

5. High- Risk Tasks - continued



► Working alone

When you cannot be seen or heard.

If you must work alone, your contact person can implement Graymont's procedure. (A call every 2 hours or less. This may also involve a « mandown » device.)

► Mobile Equipment

To use mobile equipment, you must demonstrate your qualifications.

Inspections, safety belt or harness required, secure yourself to certified anchor points, and be sure to check your surroundings if necessary.



6. Traffic on the site

▶ Right of way



Yield to pedestrians



Mining vehicles—the largest vehicle has the right of way; let it pass.
Never walk behind a vehicle that is backing up



Obey traffic signs (speed limits, stop signs, etc.)



▶ Specific Rules

- Parking under a conveyor belt or under the horizontal kilns is prohibited.
- Pay attention to the direction of traffic; the direction is reversed in the quarry and on the Heritage Project road.



▶ Communication



In the stone storage area, notify your Graymont contact person before entering the loader's work zone.

Make sure you're visible. Make eye contact and wave or use the radio.



7. Cleanliness and the environment – Plant maintenance and Waste management

- ▶ **A tidy, debris-free worksite helps prevent injuries.**

- ▶ **During and after work**
 - Put away unused tools and materials
 - Pick up debris
 - Sort and dispose of waste in the appropriate containers
 - Remove the red and yellow tape
 - ...



7. Cleanliness and environment

Environmental management

► Dust

- The task should not generate visible dust beyond 2 meters.

► Waterfront strip

- Do not do work within 10 m of a stream.

► Waters

- Do not create visible turbidity in streams

► Noise

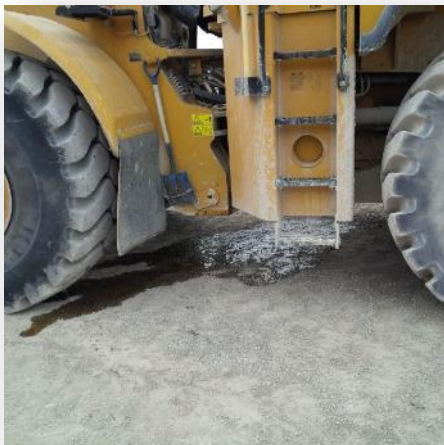
- Be aware of the noise generated by your activities in order to respect our neighbors: talk to your Graymont resource person if you have any concerns about your work



7. Cleanliness and environment

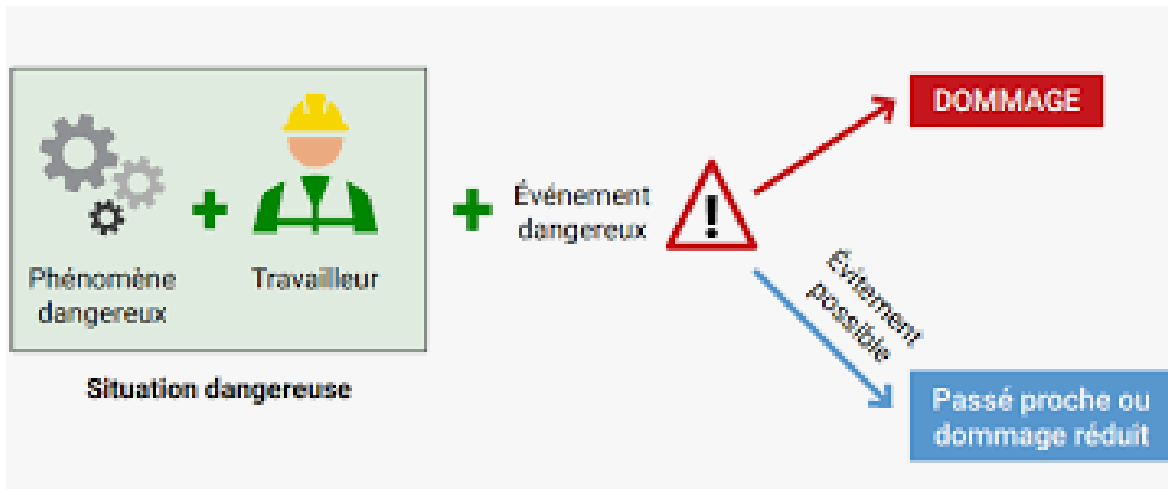
Spill prevention

- ▶ **Notify your Graymont resource persons without delay**
 - The Ministry of the Environment must be notified without delay
- ▶ **General procedure:**
 - Stop the spill without being in danger
 - Containing the spill
 - Recovering and disposing of contaminated material at an authorized site
 - Document in writing and provide Graymont with



8. Incident management– Reports

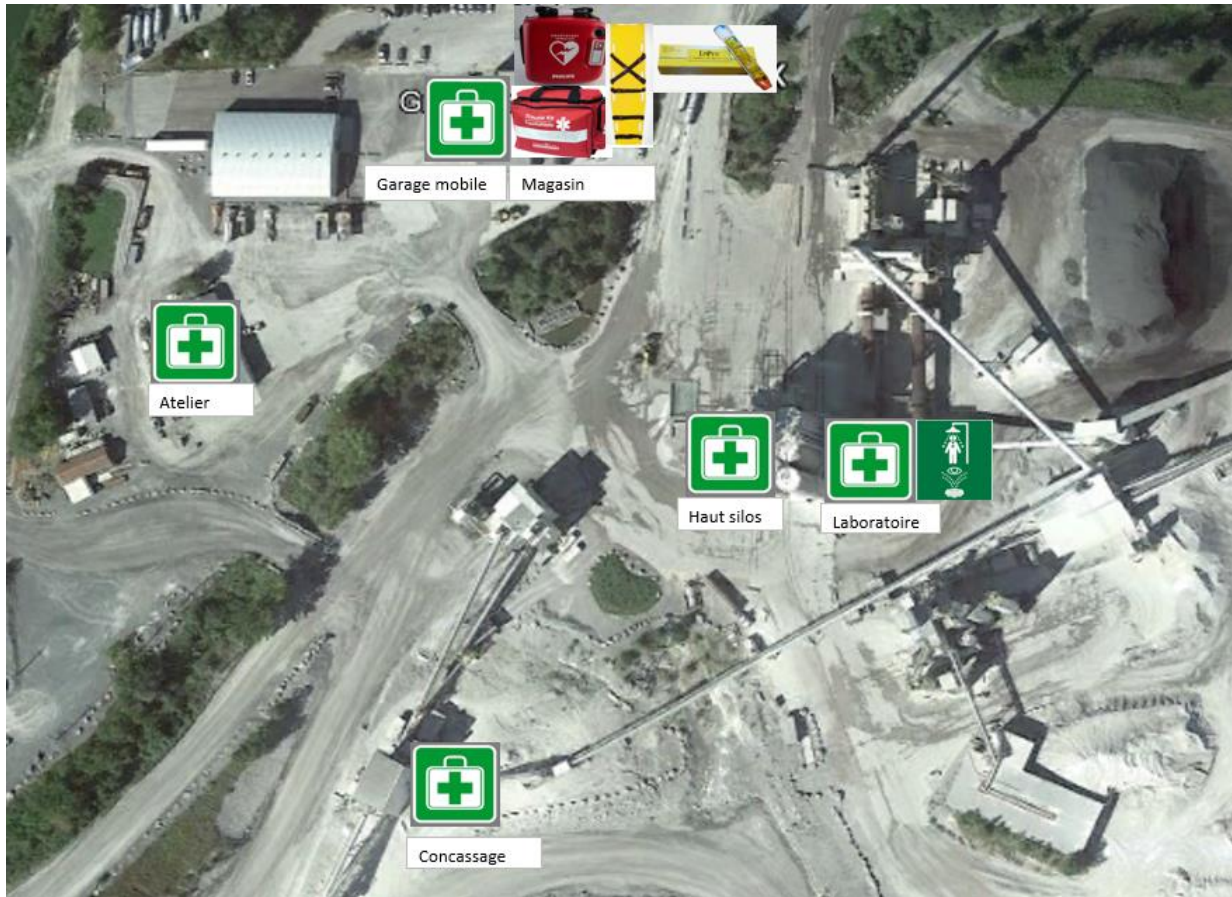
- ▶ To prevent incidents from recurring, report all incidents to your designated contact person:
 - Near misses (close calls),
 - First aid,
 - Accidents,
 - Property damage



8. Incident management – First aid and eye wash stations



- First aid personnel are on site
(first aid kits, defibrillator, and eye wash stations)



8. Incident Management – Controlled Substances (SIMDUT 2015/GHS)

- ▶ Provide the MSDS for the products you bring
- ▶ Label all secondary containers



SIMDUT 2015

Les produits liquides et gazeux inflammables
INFLAMMABLES

Les produits liquides et gazeux comburants
COMBURANTS

Objet sous pression
SOUS PRESSION

Matériau corrosif pour les métaux au contact avec l'eau
MATÉRIEL CORROSIF

Matériau autoxydant ou peroxydant
MATÉRIEL AUTROXYDANT

Produit toxique aigu
TOXIQUE AIGÜES

Danger pour la santé
DANGER POUR LA SANTÉ

Produit irritant ou sensibilisant
IRITANT ou SENSIBILISANT

Produit infectieux
INFECTIEUX

Protection personnelle

- Lunettes
- Gants
- Masque respiratoire
- Vêtements de protection
- Boots
- Masque protecteur

Précautions à prendre

- Prendre le temps de bien lire les étiquettes des produits.
- Consulter la fiche de données de sécurité au besoin.
- Respecter les ratios de dilution.
- Ne jamais mélanger deux produits.
- S'assurer que les contenants soient toujours bien identifiés.
- Ne jamais identifier un produit à la couleur, l'odeur ou l'apparence.
- Utiliser l'équipement de protection personnelle recommandé.
- Connaître les mesures de premiers soins.

Comment lire une étiquette du fournisseur

1. Identificateur du produit
2. Identificateur du fournisseur initial
3. Pictogrammes
4. Mention d'avertissement
5. Mention de danger
6. Conseils de précaution

NUMÉROS DE TÉLÉPHONE EN CAS D'URGENCE

Américain • Public • Étudiant
911

Centre anti-poison
1-800-463-5060

Centre de toxicologie
1-613-996-6666

Ligne Info
514-645-2753
www.lalema.com

REACTION

8. Incident Management – Emergency Number (first responder, fire department, etc.)

IN CASE OF EMERGENCY

Call 450-248-3579;

you will be automatically transferred to
Channel 1,

Or Tune to Channel 1 directly on the radio



- Say: **“Name, Need, and Location”**
- Wait 3 seconds to hear the response
- You are communicating with people who have radios;
- everyone must take turns speaking.

8. Incident management – In case of evacuation



A continuous siren sounds, EVACUATE

- ▶ Proceed to the assembly point (parking lot at the factory entrance)
- ▶ ROLL CALL - All employees, contractors, and visitors will be accounted for; wait for instructions before leaving.
- ▶ *Note: An intermittent siren indicates the start or end of a blasting operation.*

Complete the orientation program

► Upon arrival:

- Check in at the time clock
- Contact your designated contact person
- Obtain the emergency contact number
- Complete the orientation questionnaire

Note: Each individual must sign the form personally

