



GRAYMONT

WELCOME TO GRAYMONT

Improving our world every day in every way

Indian Creek Carrier Site Specific Training 2025

Welcome to Graymont



Health, Safety, Environmental (HSE) Policy

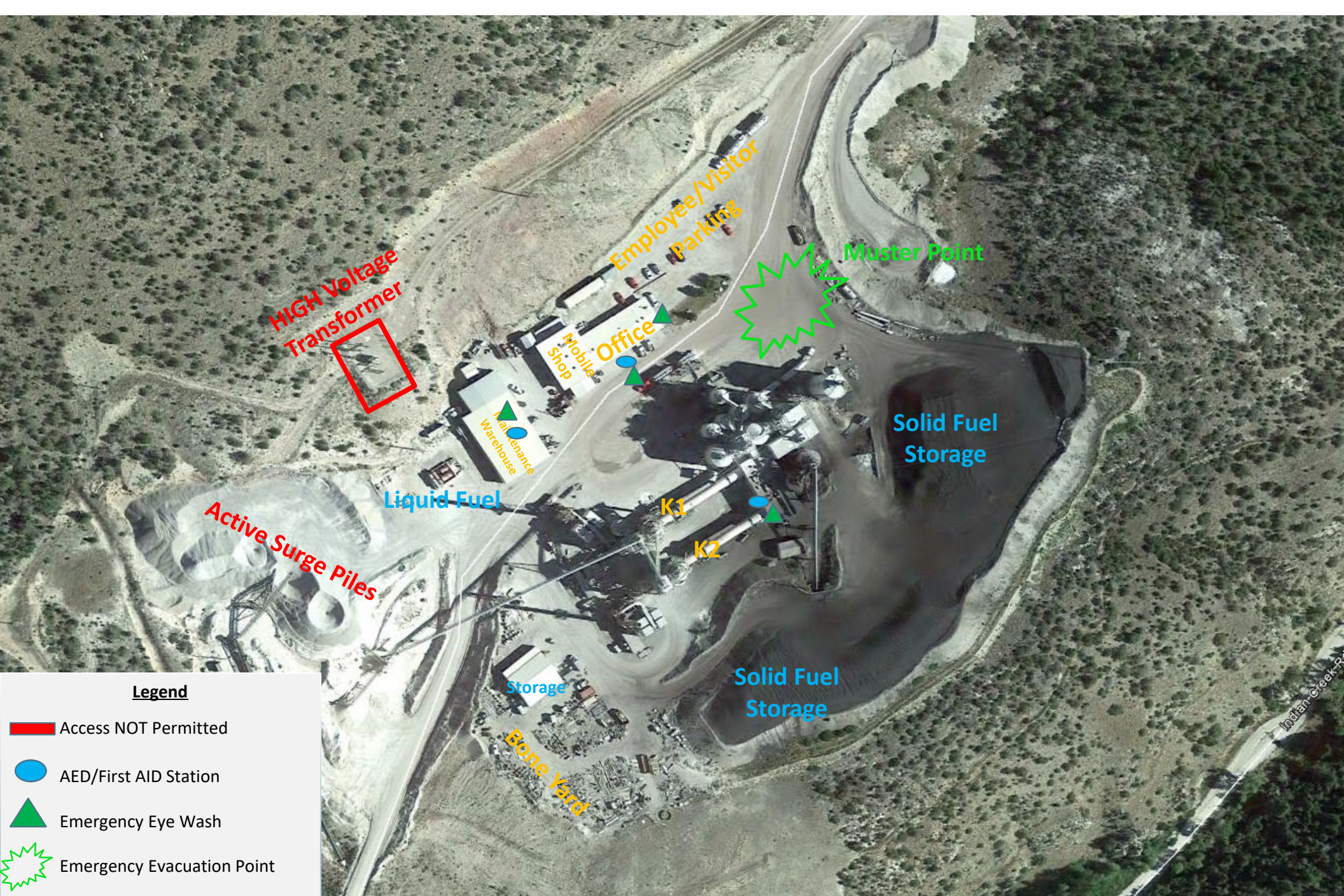
At Graymont we work together to fulfill our world-class vision by operating safe, clean, orderly facilities, where everyone shares a strong commitment to an injury-free workplace and a dedication to improving our environmental performance. Our goal is to promote the health and safety of all employees, protect and preserve the environment, and contribute to the well-being of the communities where we operate.

We require our business partners and contractors to adopt appropriate HSE practices.

Site Arrival

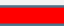



- ▶ **Pick up your Safety Orientation sticker.**
 - 2025 Color – Orange
- ▶ **Apply all PPE when you arrive on site**
 - Hard Hat
 - Steel Toed Shoes
 - Safety Glasses
 - Hi-Viz Vest, Jacket, Sweatshirt, or Shirt with reflective strips
- ▶ **Orientations must be completed on an annual basis per calendar year.**
- ▶ **A current orientation is required PRIOR to loading.**







Legend

-  Access NOT Permitted
-  AED/First AID Station
-  Emergency Eye Wash
-  Emergency Evacuation Point

Drug and Alcohol Policy

There is a Zero Tolerance policy in regards to drugs and alcohol consumption or intoxication at this site.



Alcohol and Drug testing are a component of Incident Investigation on this site. All Graymont employees and contractors are subject to random testing while working at the Indian Creek Facility.



IC Smoking Policy

Smoking (including e-cigs) is allowed
in posted **designated areas only.**

MSHA inspectors can fine individuals for smoking in non-smoking areas

IC Smokeless Tobacco Policy

Smokeless tobacco is permitted. Users **MUST** maintain exceptional hygiene practices.

- No spit cups
- No spitting in Graymont garbage cans or on Graymont walking or working surfaces (e.g. sidewalks, shop floors)



GRAYMONT

Site Conduct

Graymont is committed to providing an environment that promotes equal opportunities and prohibits discrimination.

All forms of harassment are prohibited.

All persons rights are to be respected.

All interactions are to be respectful, courteous, and responsible.



Amenities



Please use the office restroom located inside the employee breakroom.



Water at the IC site is potable. Drinking water is also provided in the employee breakroom.



Litter and refuse **MUST** be disposed of in the containers provided.

Hazardous Materials

Safety data sheets (SDS) for our products are online.

<http://www.graymont.com/en/products/material-safety-data-sheets>

Please take the time to review these.

Graymont Products

Aggregates

Landscape Grade

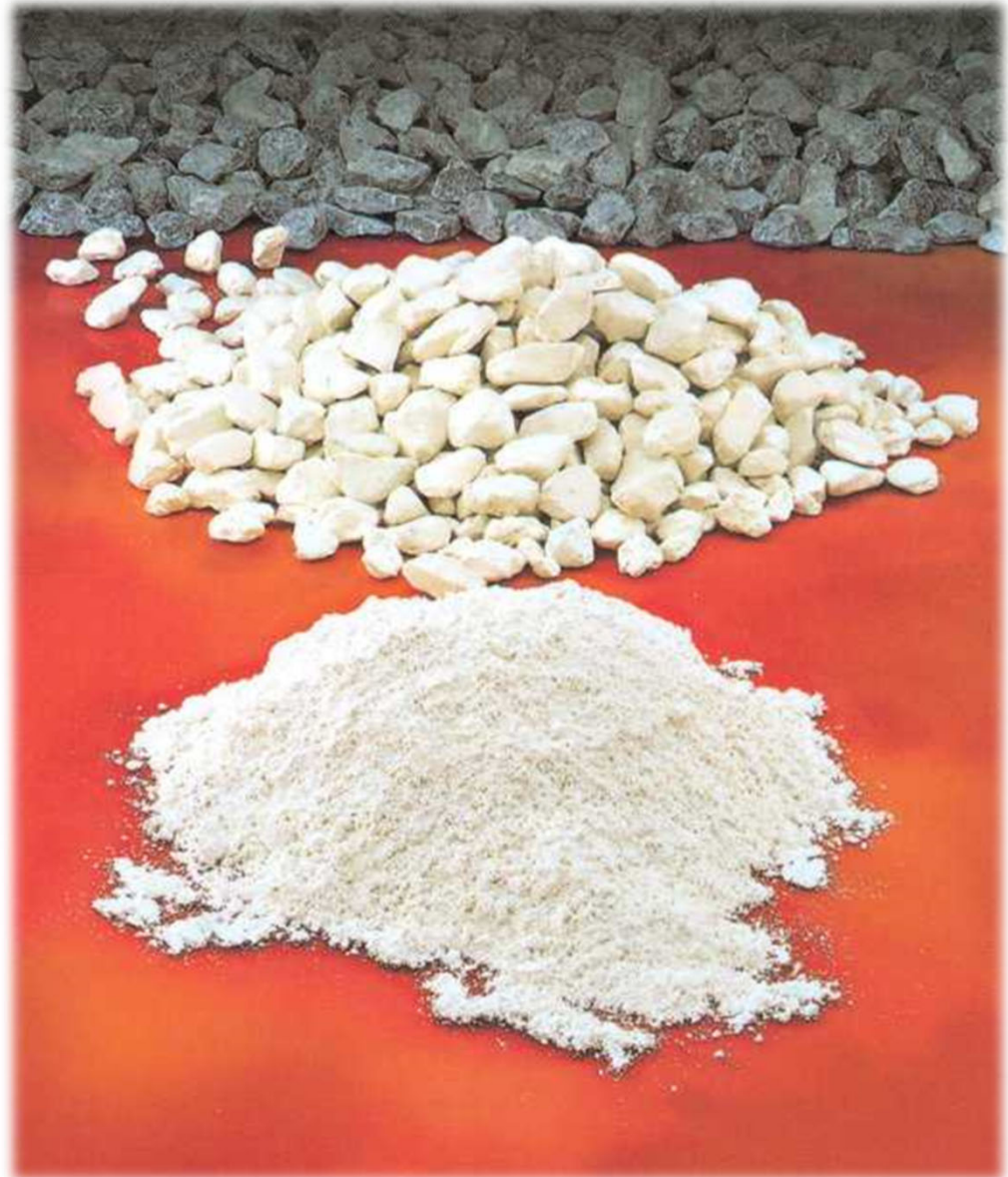
Quicklime

Pebbled and Crushed

(Calcium Oxide, CaO)

Hydrated Lime

(Calcium Hydroxide, $\text{Ca}(\text{OH})_2$)



GRAYMONT

Lime - SDS Key Information

Common Names: High Calcium Quicklime, Lime, Quicklime, Calcium Oxide, CaO

Physical State: Solid (pebble to powdered)

Odor and Appearance: Slightly Earthy Odor, White Crystalline Substance or Chunks

Fire & Explosion Data: Not flammable.

Avoid using water to fight fires unless required for other substances.

In which case flood as lime contact with water could cause ignition of paper, cardboard.

Reactivity: Reacts violently with water and acids.

Can generate heat sufficient to causes burns or ignite materials.

Strong base, can cause chemical burns of the eyes, mouth, and skin

Toxicological Information:

Routes of Entry include Skin Contact, Eye Contact, Acute Inhalation, Ingestion.

Not a recognized carcinogen may however contain trace amounts of Crystalline Silica.



Hydrate - SDS Key Information

Common Names: Calcium Hydroxide, Hydrated Lime, Slaked Lime, Milk of Lime,

Physical State: Solid

Odor and Appearance: Slightly Earthy Odor, Fine White Powder

Fire & Explosion Data: Not flammable.

Hydrate does not burn. Use extinguishing media appropriate to surrounding fire conditions.

Reactivity: Reacts violently with strong acids.

Strong base, can cause chemical burns of the eyes, mouth, and skin

Toxicological Information:

Routes of Entry include Skin Contact, Eye Contact, Acute Inhalation, Ingestion.

Not a recognized carcinogen may however contain trace amounts of Crystalline Silica.



Limestone Products - SDS Key Information

Common Names: Limestone, Calcium Carbonate, Calcite, Ground Limestone, AggLime

Physical State: Solid

Odor and Appearance: Odorless , Greyish solid or powder.

Fire & Explosion Data: Not flammable.

Limestone does not burn. Use extinguishing media appropriate to surrounding fire conditions.

Reactivity: Limestone is chemically stable.

Toxicological Information:

Routes of Entry include Skin Contact, Eye Contact, Acute Inhalation, Ingestion.

Not a recognized carcinogen may however contain trace amounts of Crystalline Silica which can cause silicosis of the lungs



Lime Product Handling Precautions

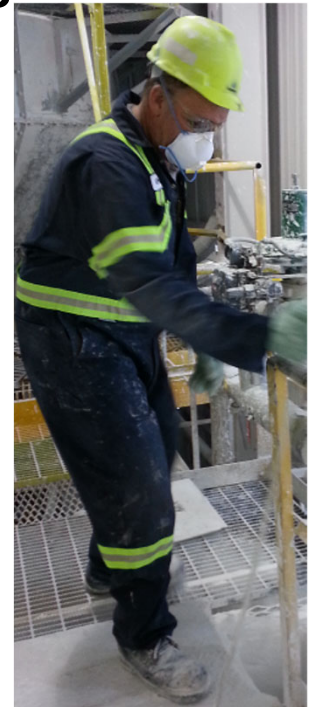
Lime products are reactive in the presence of moisture, water and acids.

(Skin is slightly acidic with a pH of 5.5 , Sweat is more acidic with a pH of 4-5)

This reaction can lead to exothermic reactions, chemical burns and/or irritation of the skin and mucus membranes.

Wear protective equipment that:

- ✓ Reduces or eliminates skin exposure
- ✓ Covers hands
- ✓ Protects eyes
- ✓ Reduces inhalation potential when conditions warrant



GRAYMONT

Site Mandatory PPE

- ▶ **Mandatory ANZI Z87 Safety Glasses/ Eye Protection with side shields.**
- ▶ **Mandatory ANSI/ISEA Z89.1 Hard Hat**
- ▶ **Mandatory Class 1 of ANSI Z107 High Vis Clothing (on the outermost layer)**
- ▶ **Mandatory ASTM F2413 Steel Toed Shoes**



Site Additional PPE

- ▶ **Dust Mask in visibly dusty conditions**



- ▶ **Hearing Protection required in production area & posted areas**



- ▶ **Gloves as warranted/needed**



Prohibited Items

- ▶ Dangling jewelry such as necklaces are not allowed on site. Remove dangling jewelry or tuck it into your shirt.
- Metal rings are not allowed to be worn while working. Remove metal rings before performing work. Silicone material rings are allowed.



NO NECKLACE

Devices and Cell Phone Use

**SAFETY
FIRST**

**NO CELL PHONES
WHILE WORKING**

Cell phone and other electronic devices are **prohibited** when:

- ▶ Working or performing tasks,
- ▶ Driving or operating equipment,
- No cell phone use while loading on the scale

Cell phone use is **permissible** while on breaks or in emergency circumstances:

- ▶ In plant office or breakroom,
- ▶ In the kiln control room,
- ▶ In or around the employee parking lot,
- ▶ Maintenance breakroom and electricians office



GRAYMONT

Site Traffic Hazards

- ▶ **SOUND HORN PRIOR TO VEHICLE MOVEMENT.**
 - ▶ One honk before moving forward, two honks before reversing
- ▶ **There may be high volumes of traffic on this site.**
- ▶ **Traffic Hazards such as heavy equipment, large trucks, mobile equipment, light vehicles, and pedestrians are present.**
- ▶ **Make certain that other moving equipment/trucks/pedestrians see you.**
- ▶ **Pedestrians: give a wide berth and right-of-way to vehicles and equipment.**
- ▶ **Pedestrians should always walk along the edge of traffic areas and in buildings where mobile equipment may be in operation.**
- ▶ **Make eye contact and exchange a wave!**



Parking – Chock your tires

- ▶ **Park in designated parking if possible.**
- ▶ **Do not interfere with traffic or emergency access at anytime.**
- ▶ **Unless parked in the employee parking area, all vehicles shall remain chocked while not in use.**
 - ▶ When parking on a grade chock and/or turn the wheels or tracks of the mobile equipment into a bank or rib.
- ▶ **Parking brakes must be set while vehicles are not in use**



Speed Limit



- ▶ Plant and yard traffic speed limit is 7 mph



Wildlife

There is an abundance of wildlife at the IC facility. This includes but is not limited to elk, deer, sheep, bears, mountain lions, and rattlesnakes. It is important to remember they are wild, and the following precautions should always be taken:

- ▶ Never approach the wildlife
- ▶ Never run
- ▶ Give them room and do NOT disrupt them
- ▶ If they approach you, appear large, and back away slowly
- ▶ Never block the animal's route to escape



Emergency Protocol

The Kiln Operator is notified and calls 911

Kiln operator is the incident commander until otherwise notified

A person is delegated to get AED if applicable

A person is delegated to meet the EMT at the IC entrance

On call or applicable supervisor is notified

Supervisor is to document the scene and who is on scene

Supervisor notifies the plant manager ASAP when appropriate



Emergency Response

Position	Name	Cell Phone Number	Secondary Contact Phone Number (Office)
Facility Manager	Paul Liner	253-722-4593	406-521-6008
Health, Safety, & Environmental	Steve Bugni	307-251-6728	406-521-6003
Quarry Supervisor	Mike Cartwright	406-980-1457	406-521-6005
Production Supervisor	Frank Sholey	406-980-0326	406-521-6002
Process Engineer	Macy Livesay	406-465-0119	406-521-6011
Maintenance Supervisor	Adam Brakefield	406-461-4857	406-521-6020
Plant Control Room	Incident Commander	406-266-5221	406-521-6012
MSHA Hotline	For MSHA reportable incidents		1-800-746-1553

Evacuation

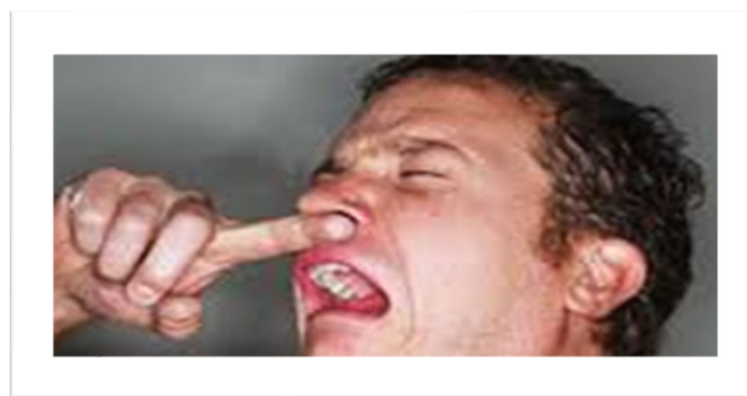
Upon constant siren from control room, employees, contractors, and plant visitors shall evacuate to the muster point located at the plant entrance to the east of the employee parking lot.



Lime - Health Risks

Acute Exposure Risks

- ▶ Skin irritation or chemical burn
- ▶ Eye irritation or chemical burn
- ▶ Irritation of breathing passages, coughing, sneezing
- ▶ Ingestion can cause mouth burns, stomach pain



**Irritancy/Burn risk is most severe to moist tissue:
eyes, ears, mouth, nose, sweaty skin**

First Aid



Do not rub the eye or skin

Gently brush off dry product from skin.

Rinse off wet product from skin.

Rinse eyes or skin gently for 20 min.

Mild inhalation – seek fresh air.

Ingestion – drink fruit juice or water/vinegar 2:1



Seek Medical Attention if warranted.

First Aid and Eyewash Station Use

AEDs are located in the Control Room, First Aid/Safety Room, Crusher Shack, Rail Yard, and Warehouse



- ▶ **2 wash types of eye stations on site, plus eye wash bottles in various locations.**
- ▶ **All have a well marked activation door or pull tab.**
- ▶ **You MUST hold your eyes open and rinse for the full 20 min. Remove contacts while rinsing if possible**



GRAYMONT

The Rail Yard



Rail Yard Safety

BE ALERT

- ▶ Watch for railcar movement!
- ▶ Listen for the horn.
- ▶ Never rely on others to protect you – **WATCH FOR YOURSELF**
- ▶ Be aware of tripping hazards – Ballast is uneven and ties and rails are slippery.
- ▶ Stay clear of the tracks whenever possible.
- ▶ Never cross under equipment.
- ▶ Never cross between cars.



Barricade Tape and Tags

A horizontal strip of red tape with the word "DANGER" printed in large, bold, black capital letters in the center.

Red Danger tape indicates immediate hazardous situation, which if not avoided, will result in death or serious injury. It is never permissible to cross red danger tape unless authorized to work on the job.

A horizontal strip of yellow tape with the word "CAUTION" printed in large, bold, black capital letters in the center.

Yellow Caution tape indicates a potentially hazardous situation, which, if not avoided, may result in minor or moderate injury. It is permissible to cross yellow caution tape only after you have contacted person(s) working in the hazardous area and or assessed the area for any potential hazards.



GRAYMONT

When you work above 4 feet!

You shall not work at height of greater then 4 feet without using the provided carbis system. If the carbis system cannot be used, contact management to arrange for fall protection.



All falls or jumps must be reported.

Trailer

Trailer lids and hatches must be closed prior to arriving at the IC facility, if they are open you will NOT be loaded. Drivers shall properly use the provided carbis system.



Do **NOT** push carbis while in the down position!



Fugitive Dust Mitigations

All carriers must have a covered truck when hauling products other than landscape aggregate product.

- ▶ Trucks must be clean of loose product prior to leaving the site.
- ▶ Trucks must be covered with the appropriate tarp.
- ▶ Truck hatches must closed prior to leaving the site.



Dust and Spill Prevention

- ▶ Help us prevent fugitive dust and spills.
- ▶ Ensure gates are tightly closed.
- ▶ Refrain from pressurizing too quickly.
- ▶ Drive slowly and with care when your hatches are open.
- ▶ Use vacuum located at the top of the carbis system to clean hydrate.
- ▶ Report all spills. Inspect trucks for fuel, oil, hydraulic fluid, and coolant leaks



Clean up charges may be assessed to any carrier caught dumping material on Graymont Property

Scaling In

▶ Required Information

▶ Truck ID Number

- ▶ Dick Irvin – 04DIC-Pxxx (one of their trailer numbers)
- ▶ Warren Transport – 04WAR-xxxx (trailer #)
- ▶ Prince Inc – 04PRI-xxx
- ▶ Red River Supply – 04RED-Bxx
- ▶ Riverside Contracting – 04RIV-xxx
- ▶ LHC – 04LHC-xxx

▶ Trailer ID Number

▶ Shipment Number

- ▶ The eight (8) digit number given to your dispatch by the Graymont Customer Services Representative
 - ▶ i.e. 46701378

▶ Product ID to be picked up and how many tons to be loaded

- ▶ 1100/901 – Pebble 3/4x3/8
- ▶ 1101/903 – Crushed 3/8 Minus
- ▶ 1075 – Pebble $\frac{3}{4}$ Minus
- ▶ 2000/2101 - Hydrate



Shipping Issues

► To resolve any shipping issues:

► Customer Service Representative

► Marla Yuhas 406-317-2548

• Alternates:

• Stephanie Kopischke 435-864-5787

• George Lyons 775-483-5028



► After hours, the phone in the scale shack can be used to reach the operators on site.

HSE Reporting

Help us to continue on our journey to World Class.

► **Report every:**

- Near miss
- Good catch
- Property incident (truck damage, collisions)
- Environmental incident (spills, dust etc...)
- First aid, medical or injury incidents.

We accept reports via email, phone and in person.

Deliveries

All deliveries shall be placed in the receiving area in the maintenance shop.



Smile you're on Camera

Please be Advised

For quality assurance purposes cameras are in use on the Indian Creek Plant Site



Graymont property cannot be removed without authorization from the appropriate department.

Orientation Quiz

Orientation Quiz Link

Click on the link above

Complete the Quiz

Hit Submit – It will display “Thanks”

NO Certificate or Email feature is available at this time.

Once you arrive onsite, report to the office (during regular office hours)
to receive your hard hat sticker.

Individuals must complete the orientation annually.

